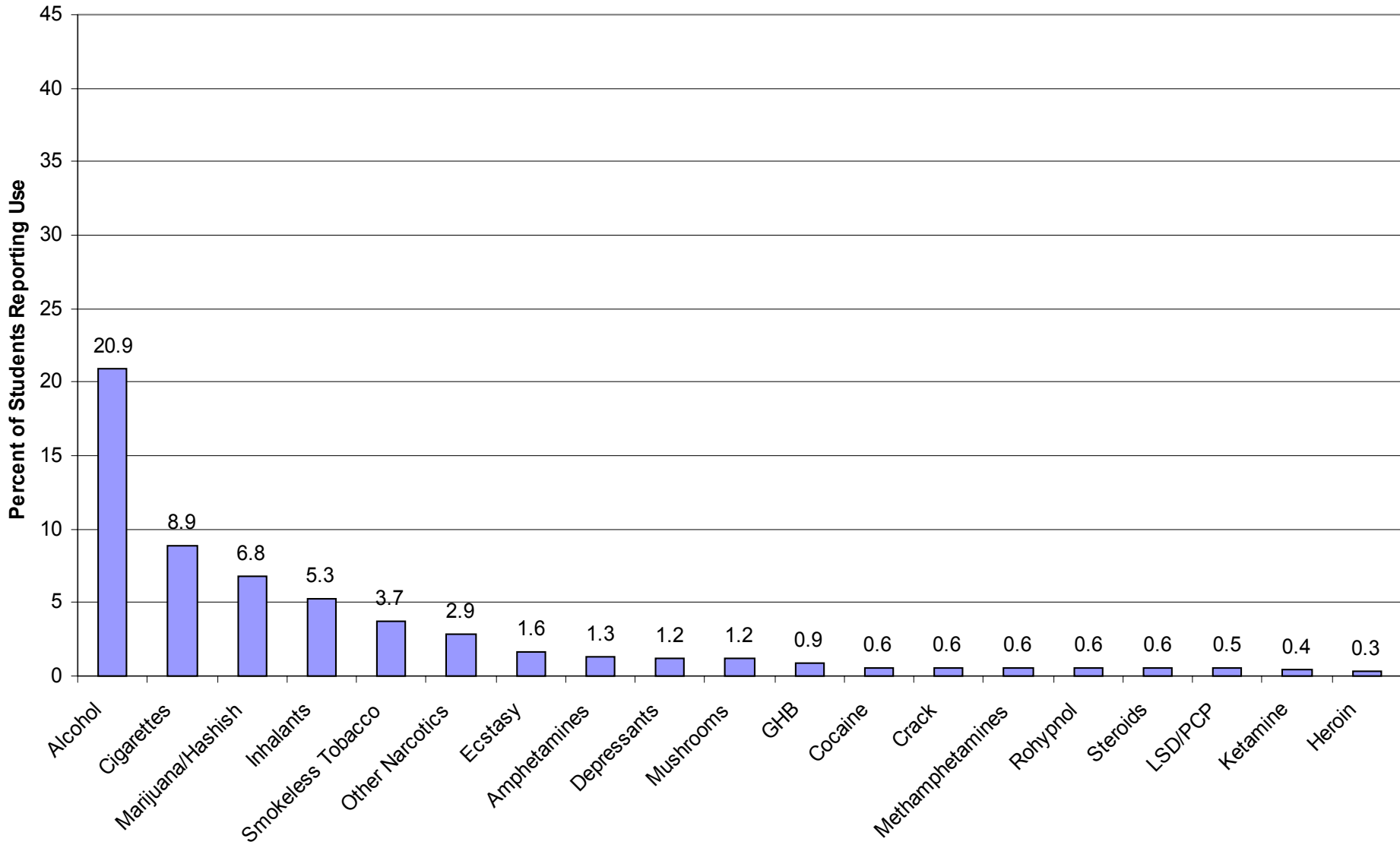
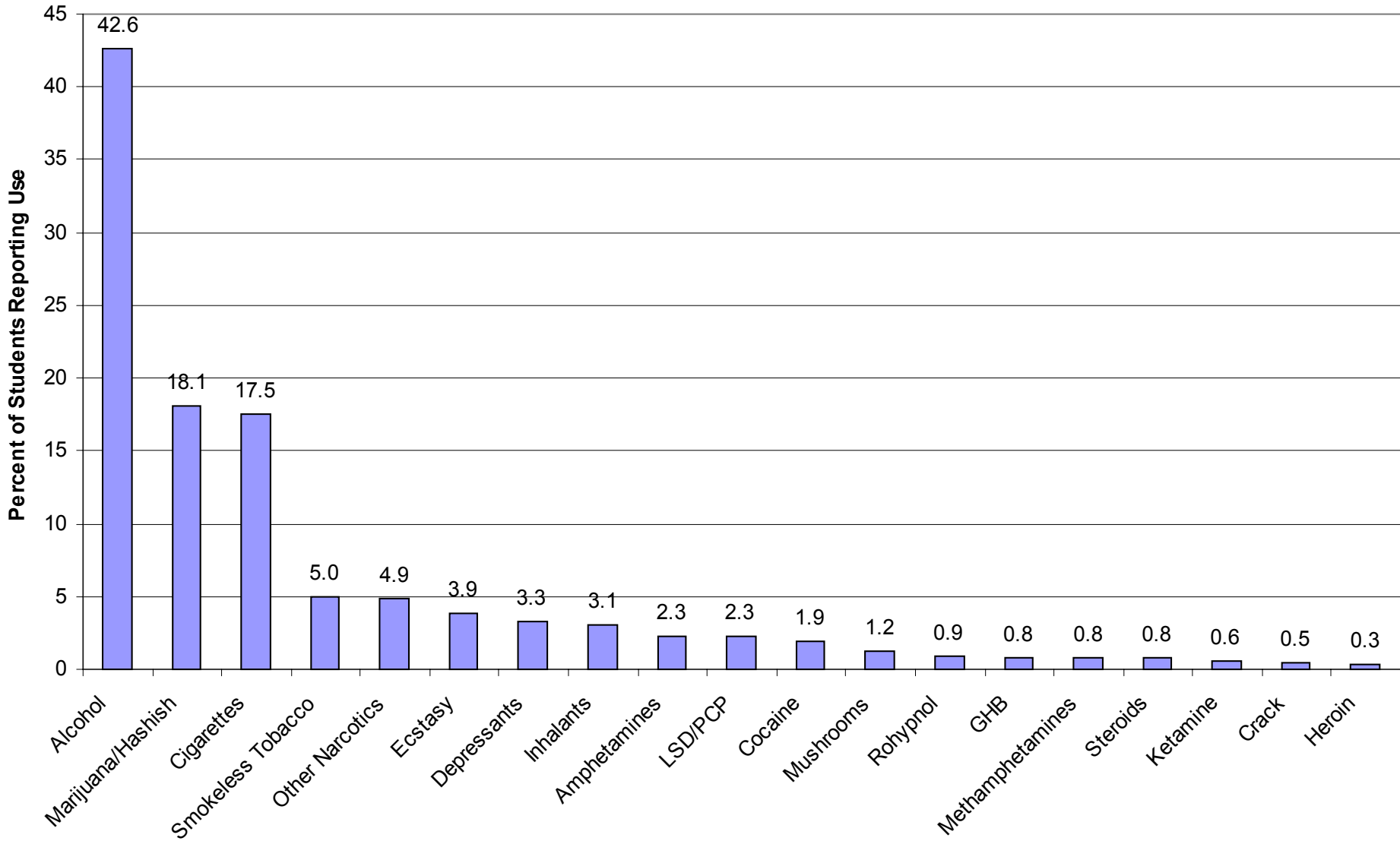


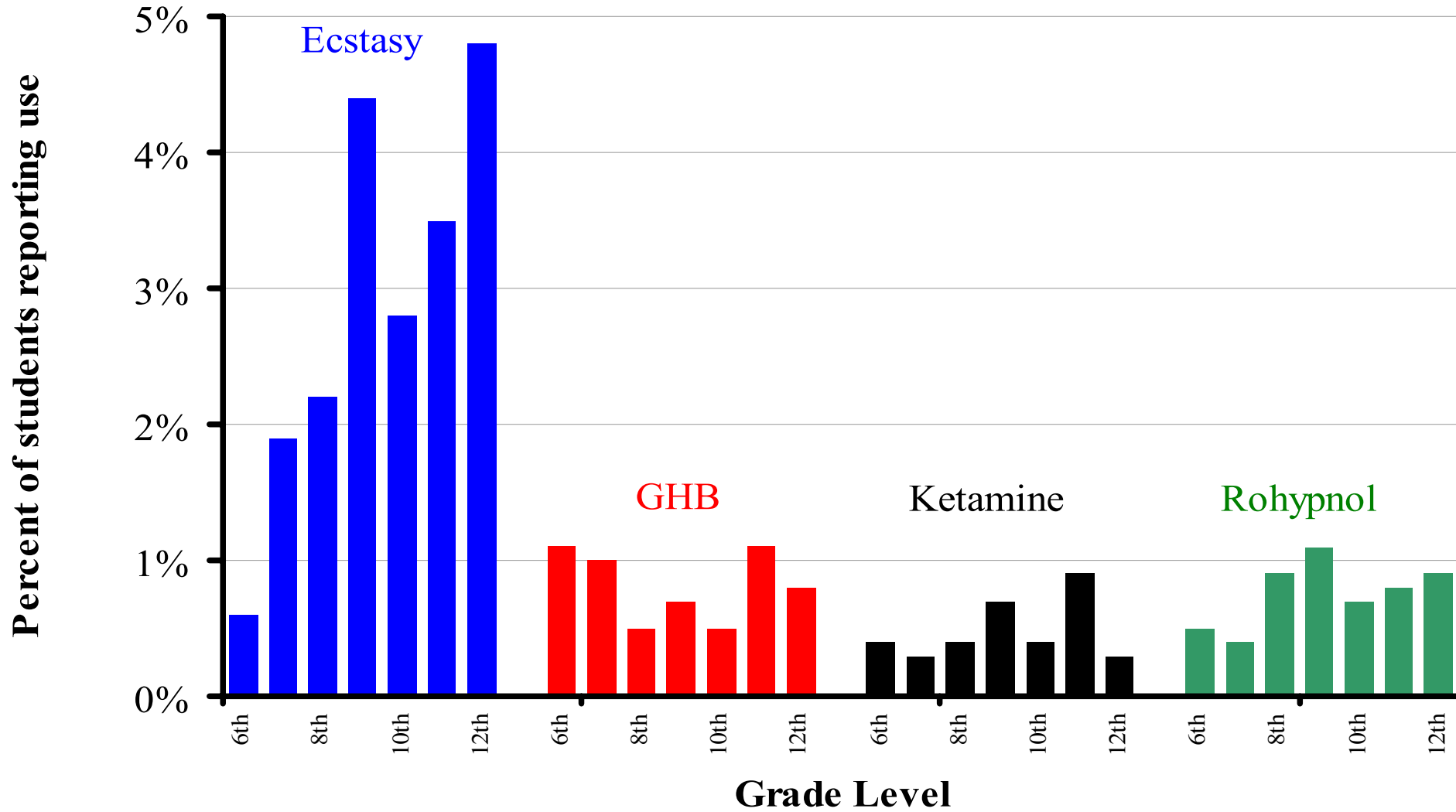
### 30-day Prevalence Rates (Middle School Students)



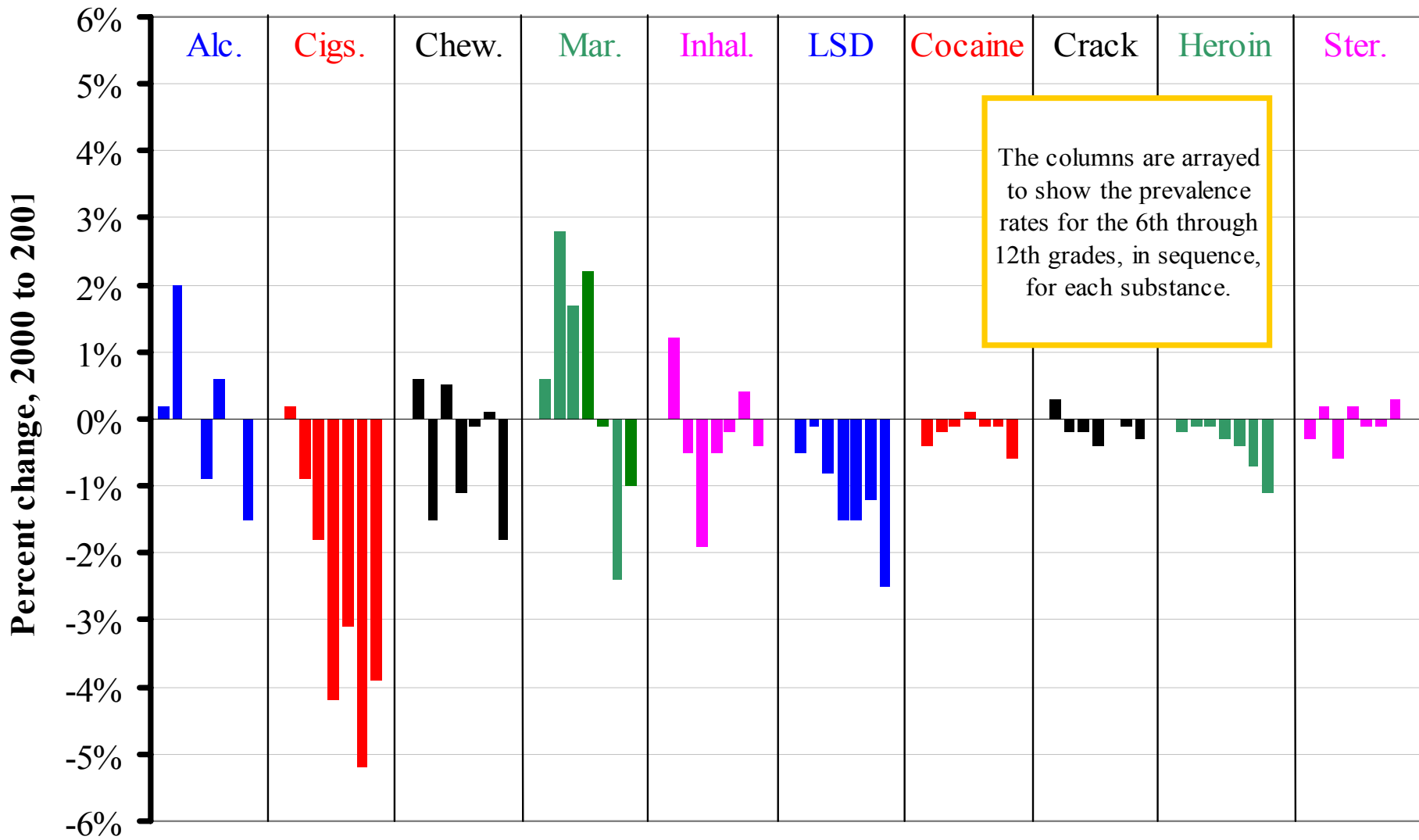
### 30-day Prevalence Rates (High School Students)



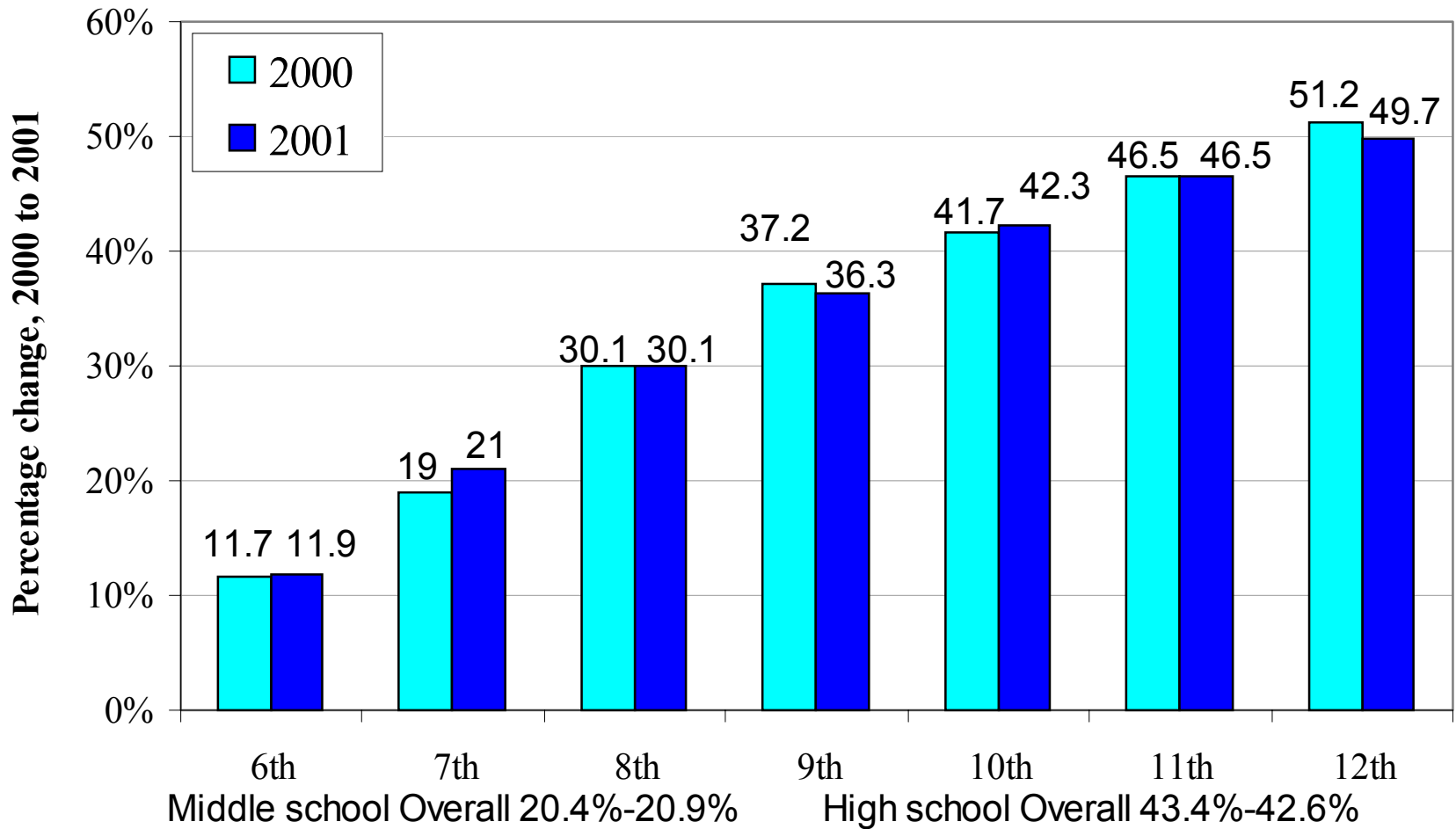
# Students' past 30-day use of Various "Club Drugs"



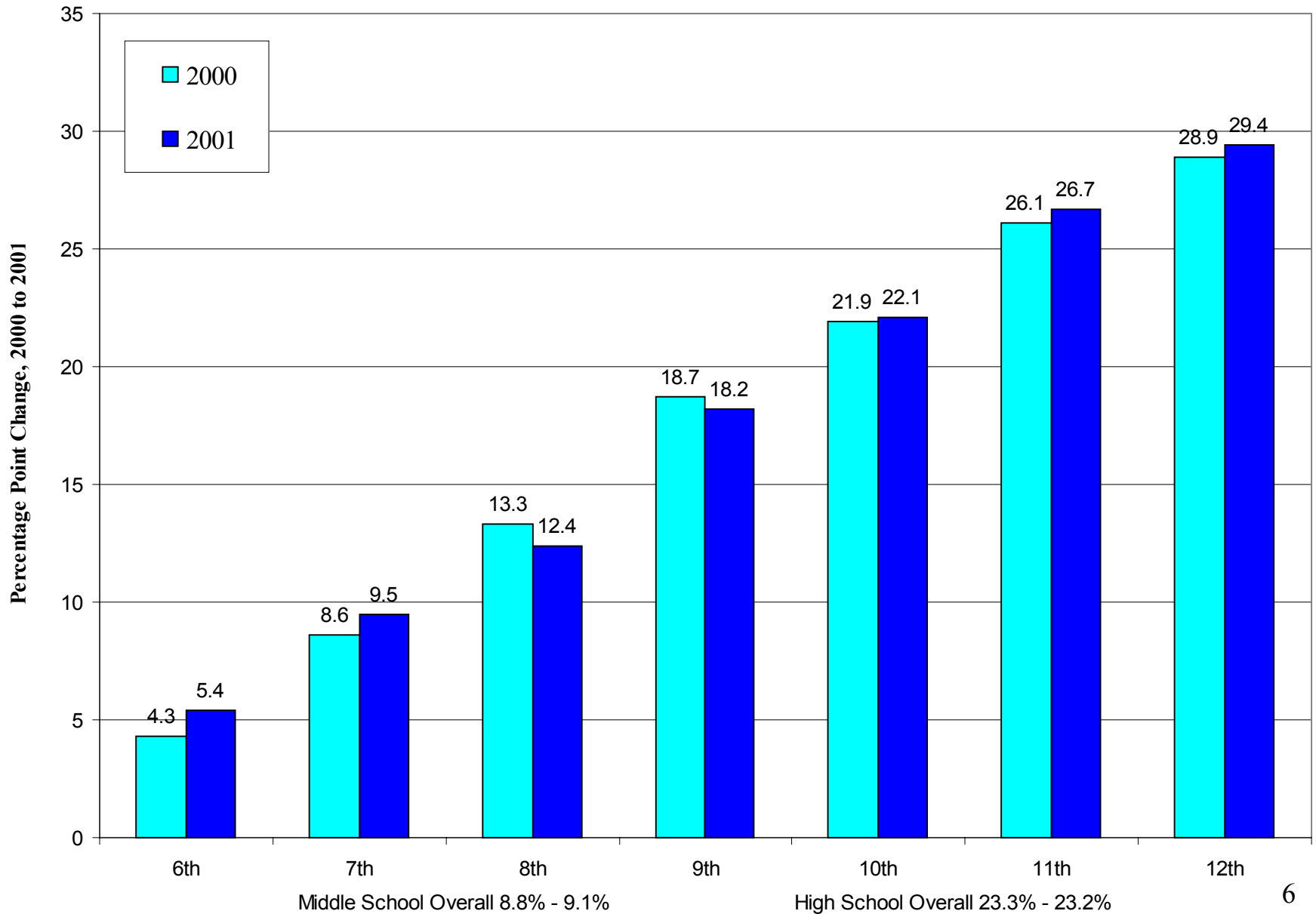
## Change in prevalence estimates, from 2000 to 2001 FYASAs, past 30-day use



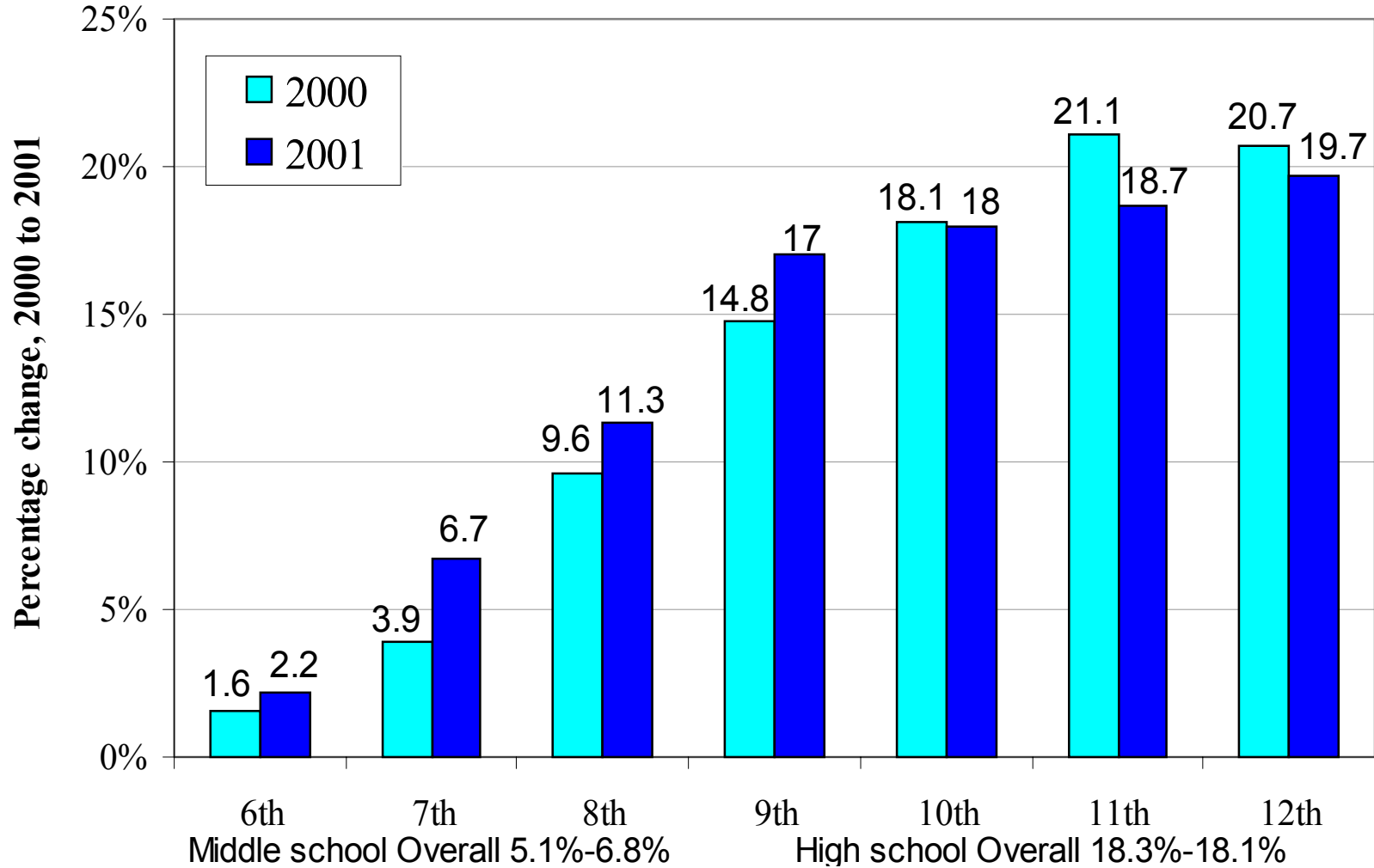
# Change in students' past 30-day use of alcohol



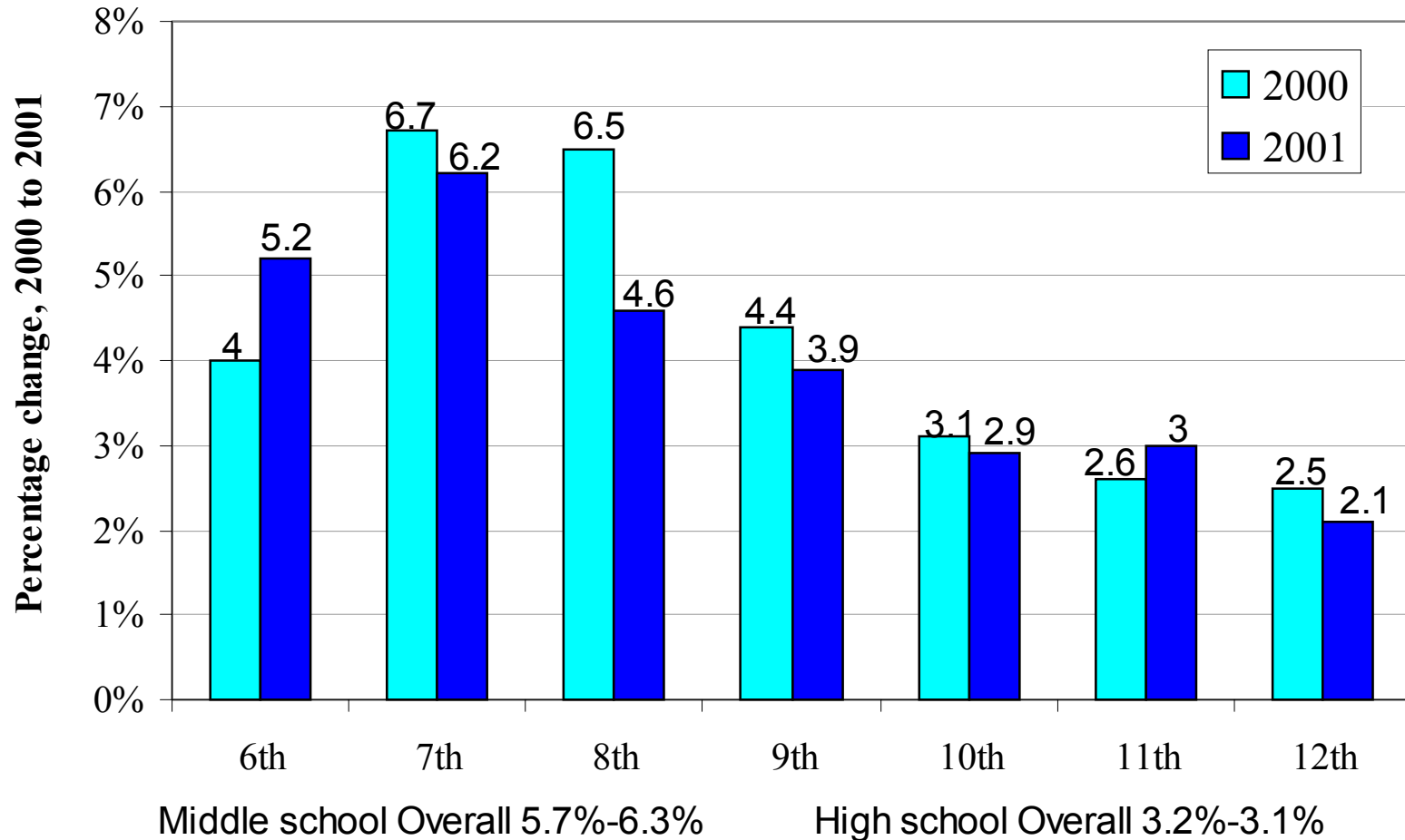
# Change in students' past 30-day Binge Drinking



# Change in students' past 30-day use of marijuana

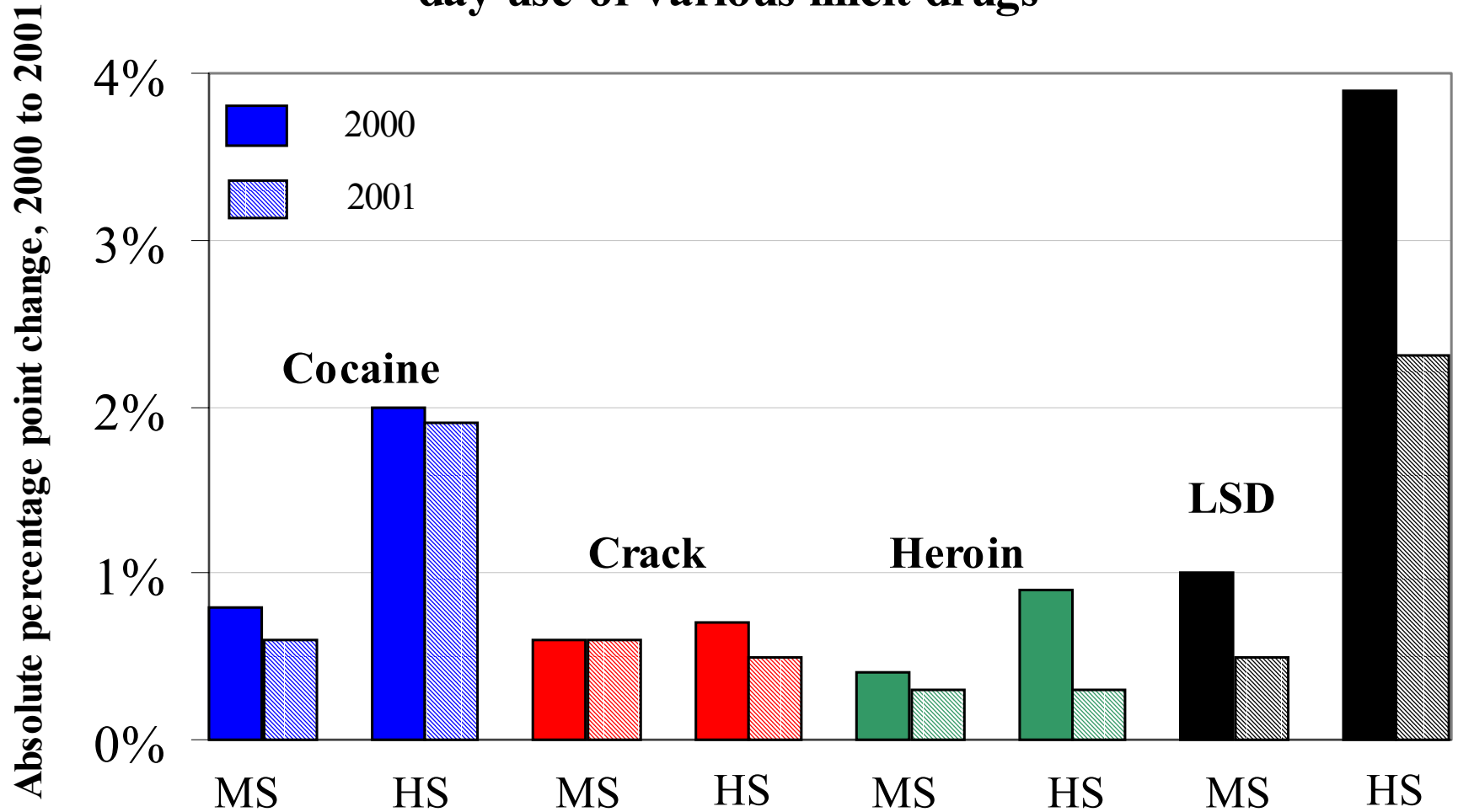


## Change in students' past 30-day use of inhalants

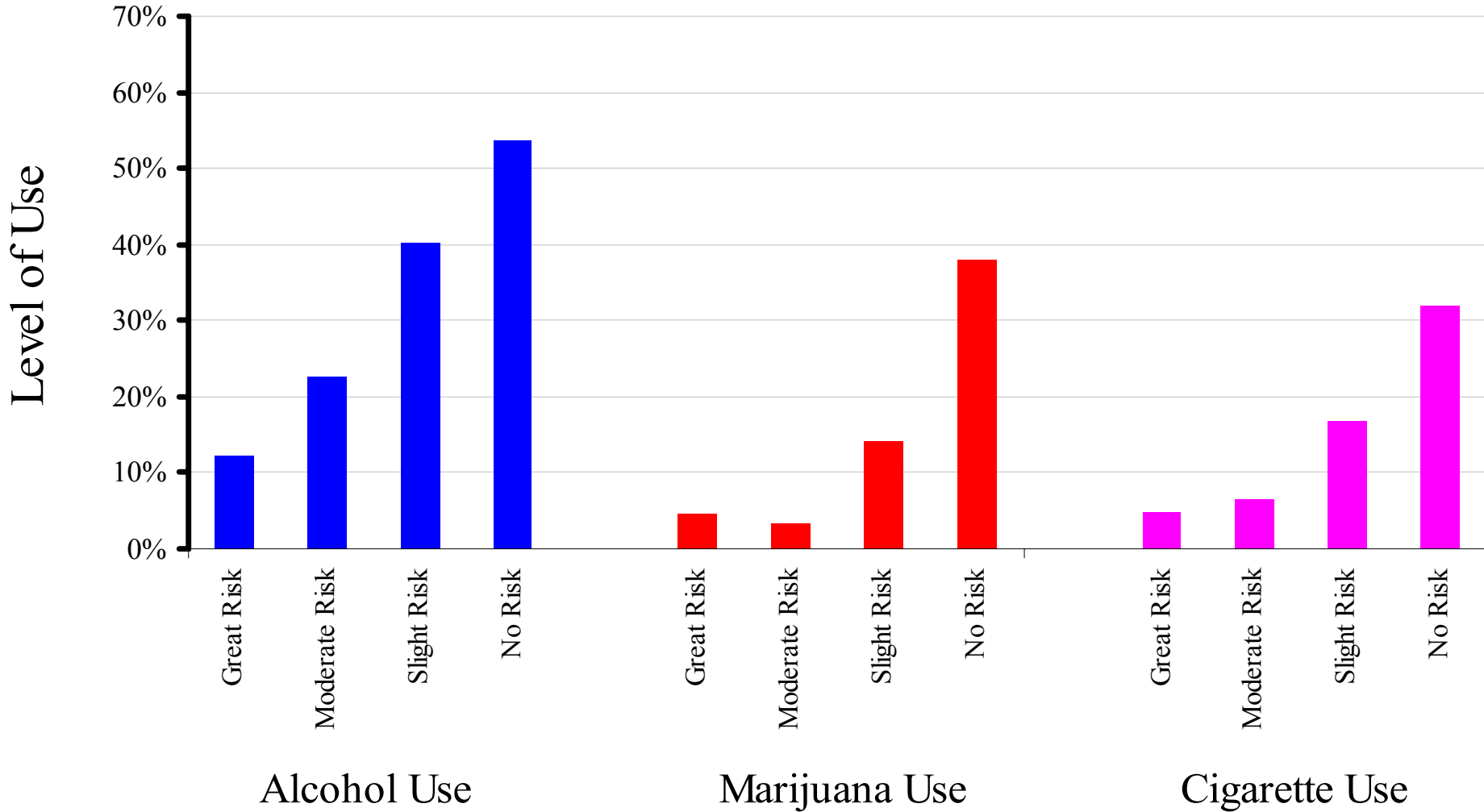




## Change in middle school and high school students' past 30-day use of various illicit drugs



# The relationship between students' perceived risk of drug use and the past 30-day use of alcohol, marijuana, and cigarettes



The relationship between the students' reports of "How Wrong" parents feel it would be to use drugs use and the past 30-day use of alcohol, marijuana, and cigarettes

